

INSTANT, AUTOMATED MICROSEGMENTATION:

How Zero Networks & Claroty Unite to Secure CPS Environments

Internet of Things (IoT) and Operational Technology (OT) –now known as Cyber Physical Systems (CPS) – are increasingly targeted by cyber threats, with attackers exploiting vulnerabilities in critical infrastructure. Traditional segmentation methods in CPS environments are often too manual, complex, and resource-intensive to be effective at scale.

That's why Claroty and Zero Networks have partnered to extend automated microsegmentation beyond just traditional IT systems to CPS. By combining Claroty's deep asset intelligence – xDome – with Zero Networks' identity-based microsegmentation solution – Zero NetSeg – CPS security teams can finally reduce risk and stop lateral movement – without manual rule configuration or requiring agents.

How it Works:

The integration between Claroty's xDome and Zero NetSeg makes deployment seamless:



Connect:

Administrators configure API credentials for Claroty in the Zero Networks Management Portal.



Discover:

CPS assets and metadata from xDome are automatically imported.



Learn & Enforce:

After a 30-day learning period, Zero Networks generates and enforces tailored segmentation policies across your CPS network.

Key Benefits:



Automated, Granular Segmentation

- Zero Networks leverages Claroty's CPS asset repository to dynamically create accurate segmentation rules tailored to each device.
- Eliminates manual ACL rule configuration, reducing operational overhead and improving security posture.



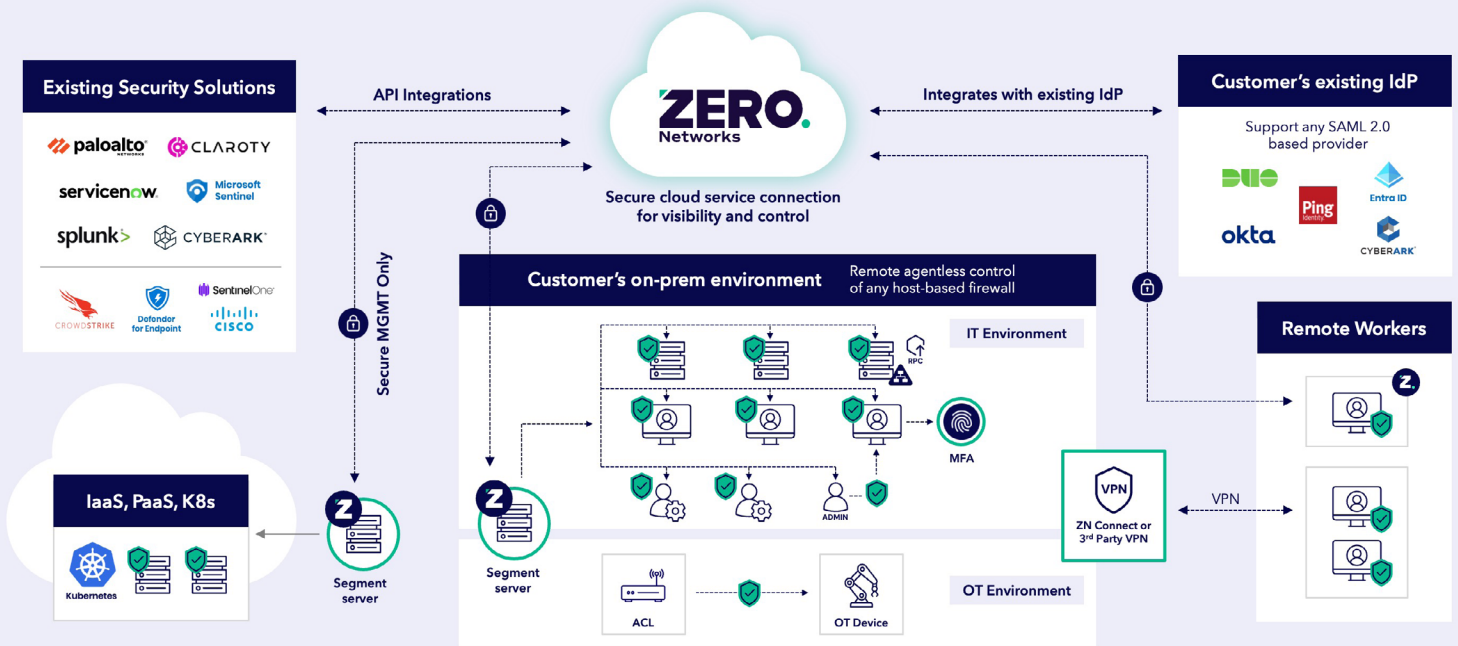
Always-Aligned Policies

- Claroty's xDome continuously updates CPS asset visibility, ensuring segmentation policies remain aligned with real-time network changes.
- Security teams gain insight into asset types, locations, and communication patterns.



Context-Aware Policy Enforcement

- Automated security policies are applied based on asset type, function, and risk profile, ensuring minimal disruption to CPS operations.
- Just in time MFA for privileged ports and between IT and CPS environments, strengthens access controls and prevents unauthorized lateral movement.



About Claroty xDome

Claroty xDome was designed to help both IT and OT teams overcome challenges associated with digital transformation and a converged IT/OT network environment. It enables detection and response to the earliest indicators of threats while extending existing enterprise security and risk infrastructure to industrial networks. This solution ensures that the controls used in IT environments to minimize risks are similarly applied in OT environments, enhancing overall network security.



About Zero Networks

Zero Networks pioneers automated microsegmentation, offering agentless solutions for easy deployment. We automatically classify endpoints to create precise security policies, preventing unauthorized lateral movement and enforcing just-in-time MFA for privileged access. This enhances protection for critical assets, strengthening security with minimal effort. Visit www.zeronetworks.com.